



800-336-4864

tele-movers.com

TELCHIME AT2, BT2, BT4

Thank you for using our products.

INSTALLATION INSTRUCTIONS ELECTRONIC TELCHIMES

Use this product according to this instruction manual. Please keep this instruction manual for future reference.

MODELS: CH-AT2, CH-BT2, CH-BT4

APPLICATION INFORMATION:

TelChimes provide a pleasant chime signal as an alternative to standard telephone bell ringers and electronic warblers. They are designed for use with telephone communications systems, and are available in a variety of operating voltages from 18 to 60 Volts AC/DC (CH-BT4 available in DC only). Refer to specifications section for rated input voltage of each TelChime model.

All TelChimes produce a single chime sound during each cycle of interrupted ringing voltage. The CH-BT2 and CH-BT4 can also be operated in the vibrating mode. All models include both volume and tone adjustments, and feature low current draw to minimize line loading.

Model CH-AT2 is recommended for use in indoor areas up to 1000 square feet. Models CH-BT2 and CH-BT4 are recommended for larger areas up to 5000 square feet and for noisy locations.

NOTE: All **CAUTIONS** and **WARNINGS** are identified by the symbol \triangle . All warnings are printed in bold capital letters.

\triangle WARNING: READ THESE INSTRUCTIONS CAREFULLY. FAILURE TO COMPLY WITH ANY OF THE FOLLOWING INSTRUCTIONS, CAUTIONS AND WARNINGS COULD RESULT IN IMPROPER APPLICATION, INSTALLATION AND/OR OPERATION OF THESE PRODUCTS IN AN EMERGENCY SITUATION, WHICH COULD RESULT IN PROPERTY DAMAGE AND SERIOUS INJURY OR DEATH TO YOU AND/OR OTHERS.

SPECIFICATIONS:

<i>Table 1.</i>			
Model Number	CH-AT2	CH-BT2	CH-BT4
Peak dBA At 1 Meter	80dBA	90dBA	90dBA
Input Voltage	18-30VAC/DC	18-30VAC/DC	38-60DC
Input Current	.020A	.020A	.010A
Minimum Ring Cycle On Time	0.25 Second		
Chime Frequency Adjustable Range	750-1200Hz		
Input Termination	6 Position Modular Jack Through Pin 2 (Black) & Pin 5 (Yellow)		
	-----	Terminal	

MOUNTING INFORMATION:

The CH-AT2, CH-BT2 and CH-BT4 are designed for mounting to interior structures such as walls, partitions or posts. To mount the CH-AT2, space the 2 mounting screws (provided) vertically on 2.00" centers (see Figure 1). To mount the CH-BT2 and CH-BT4, space the 2 mounting screws (provided) horizontally on 2.75" centers (see Figure 2). Hang the chime securely by means of the keyholes on the back of each unit. For hollow walls or thin panels, use appropriate dry wall fasteners.

\triangle CAUTION: These devices are not intended for use in hazardous locations as defined by the National Electrical Code (NEC) and by the National Fire Protection Association (NFPA). Contact Wheelock Inc. for information on explosion-proof devices designed for hazardous locations.

Copyright 1986, 1988, 1989, 1990, 1991, 1992, 1993, 1994, 1995 Wheelock, Inc. All rights reserved.

Figure 1: CH-AT2 Mounting Template

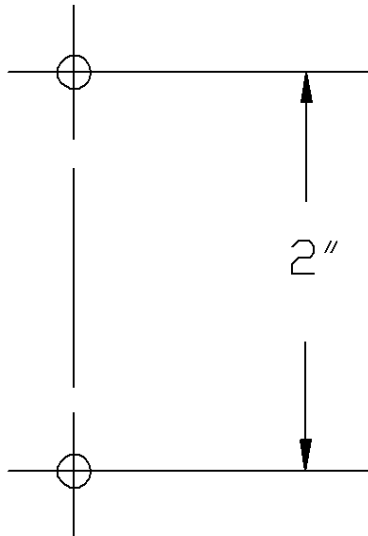
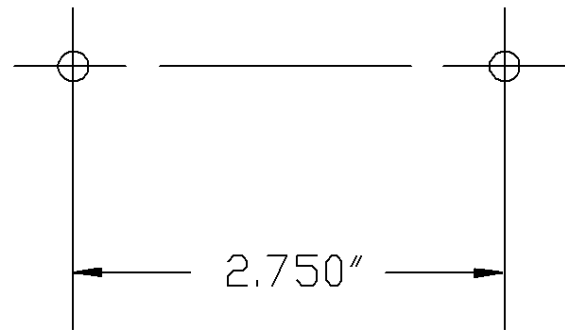


Figure 2: CH-BT2 & CH-BT4 Mounting Template



NOTE: Mounting Templates not to scale.

WIRING INFORMATION:

1. Modular connection for models CH-AT2, CH-BT2 and CH-BT4:
Connect TelChimes to the telephone system with a standard modular line cord (not provided). The cord is typically 7 feet in length with a modular plug to mate with an RJ-11C jack in the USA or a CA-11 jack in Canada. Refer to Figure 3 for CH-AT2 connection and adjustments. Refer to Figures 4 and 5 for CH-BT2 and CH-BT4 connection and adjustments.
2. Hard wire connection for models CH-BT2 and CH-BT4 only:
Remove the top cover by pushing the latch at the bottom of the housing base with a small screwdriver, refer to Figure 4. Disconnect the speaker wires by unplugging them from the PC Board pins P1 (red) and P2 (black). Route the black and yellow wires from the telephone system through the opening in the phone jack. Then connect the black and yellow wires to the terminals TB1 marked + and - see Figure 6. Note the polarity is not sensitive. Reconnect the speaker wires to pins marked P1 (red) and P2 (black). Snap cover back onto base. Be sure that the base sides line up between the cover sides and the 4 fingers in the cover sides, see Figure 7.
3. When the CH-BT2, and CH-BT4 are connected to an interrupted operating voltage, leave the jumper setting on SS (single stroke). When connected to a continuous operating voltage, change the jumper setting to VIB (vibrating); see Figure 8.
4. After completing the installation, test by having someone ring your telephone to make sure the signal functions properly.

NOTES:

1. The Electronic TelChimes do not eliminate existing ringers. Such ringers can be disconnected when TelChimes are installed.
2. The TelChimes are not polarity sensitive.
3. All TelChimes are shipped with controls preset as follows:
(A) Volume control at maximum.
(B) Tone control at 960Hz for "A" Chime, 830Hz for "B" Chime.
Settings (A) and (B) are selected to achieve peak sound output (dBA at 1 meter). Volume and tone controls may be readjusted as required. Note that changes in factory setting of either or both controls will reduce sound output.

Figure 3: CH-AT2

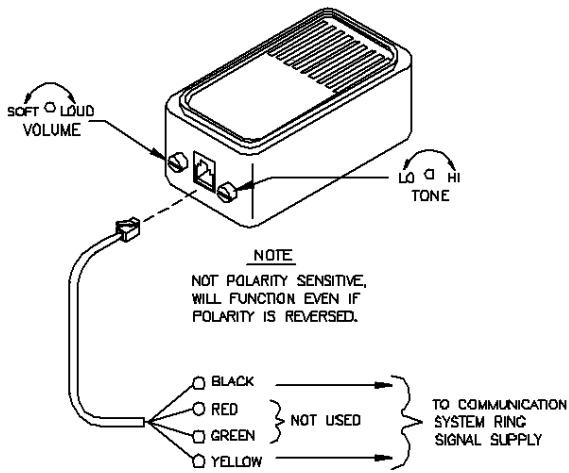


Figure 4: CH-BT2 & CH-BT4

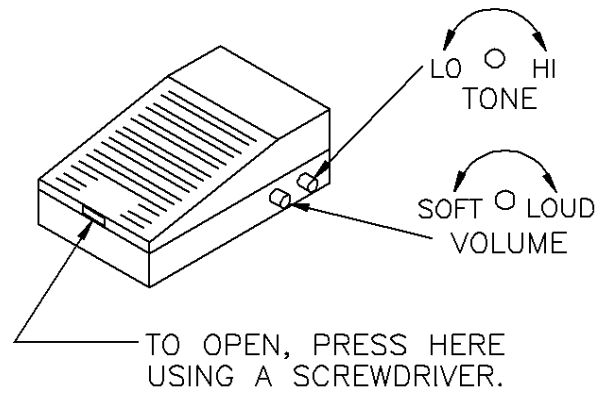


Figure 5: CH-BT2 & CH-BT4

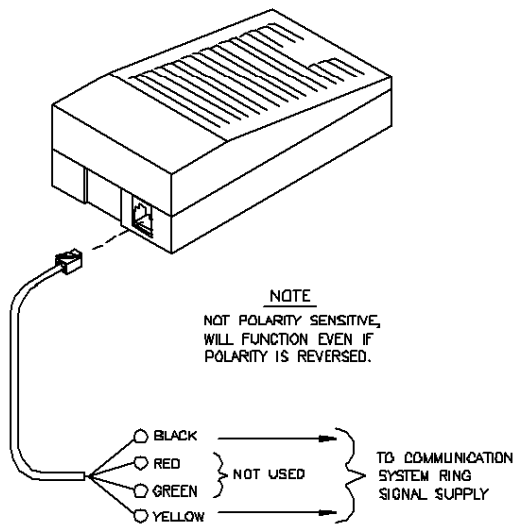


Figure 6: Wiring Diagram for Hard Wire Connection CH-BT2 & CH-BT4

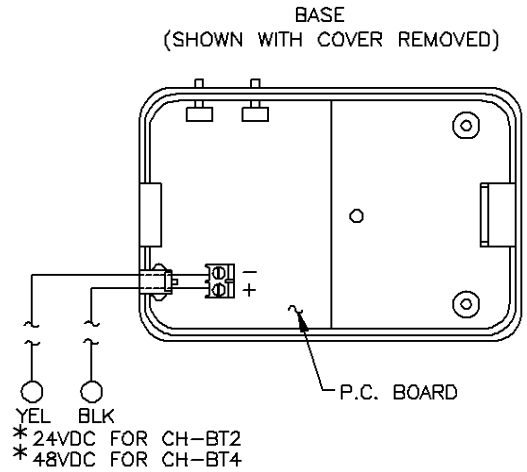


Figure 7: CH-BT2 & CH-BT4

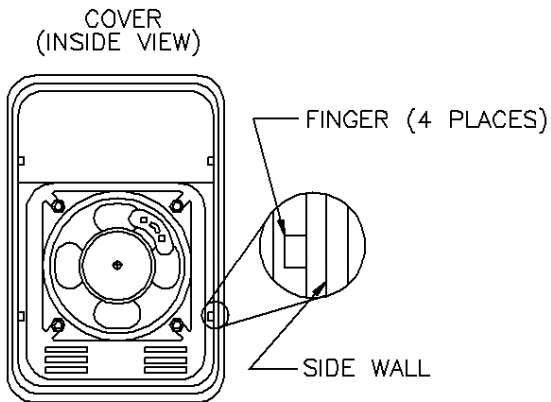
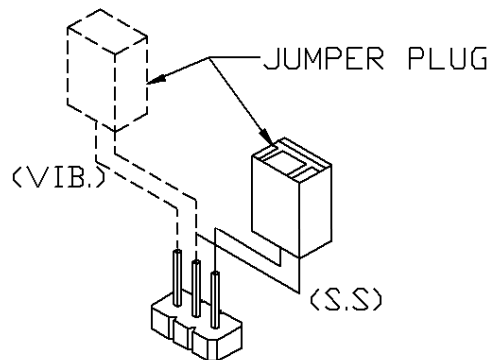


Figure 8: Adjustments for Single Stroke and Vibrating Modes. (CH-BT2 & CH-BT4 Only)



ANY MATERIAL EXTRAPOLATED FROM THIS DOCUMENT OR FROM WHEELOCK MANUALS OR OTHER DOCUMENTS DESCRIBING THE PRODUCT FOR USE IN PROMOTIONAL OR ADVERTISING CLAIMS, OR FOR ANY OTHER USE, INCLUDING DESCRIPTION OF THE PRODUCT'S APPLICATION, OPERATION, INSTALLATION AND TESTING IS USED AT THE SOLE RISK OF THE USER AND WHEELOCK WILL NOT HAVE ANY LIABILITY FOR SUCH USE.

IMPORTANT: READ SEPARATE "GENERAL INFORMATION" SHEET FOR INFORMATION ON THE PLACEMENT, LIMITATIONS, INSTALLATION, FINAL CHECKOUT, AND PERIODIC TESTING OF NOTIFICATION APPLIANCES.

Limited Warranty

Wheelock products must be used within their published specifications and must be PROPERLY specified, applied, installed, operated, maintained and operationally tested in accordance with these instructions at the time of installation and at least twice a year or more often and in accordance with local, state and federal codes, regulations and laws. Specification, application, installation, operation, maintenance and testing must be performed by qualified personnel for proper operation in accordance with all of the latest National Fire Protection Association (NFPA), Underwriters' Laboratories (UL), Underwriters' Laboratories of Canada (ULC), National Electrical Code (NEC), Occupational Safety and Health Administration (OSHA), local, state, county, province, district, federal and other applicable building and fire standards, guidelines, regulations, laws and codes including, but not limited to, all appendices and amendments and the requirements of the local authority having jurisdiction (AHJ). Wheelock products when properly specified, applied, installed, operated, maintained and operationally tested as provided above are warranted against mechanical and electrical defects for a period of three years from date of manufacture (as determined by date code). Correction of defects by repair or replacement shall be at Wheelock's sole discretion and shall constitute fulfillment of all obligations under this warranty. THE FOREGOING LIMITED WARRANTY SHALL IMMEDIATELY TERMINATE IN THE EVENT ANY PART NOT FURNISHED BY WHEELOCK IS INSTALLED IN THE PRODUCT. THE FOREGOING LIMITED WARRANTY SPECIFICALLY EXCLUDES ANY SOFTWARE REQUIRED FOR THE OPERATION OF OR INCLUDED IN A PRODUCT. WHEELOCK MAKES NO REPRESENTATION OR WARRANTY OF ANY OTHER KIND, EXPRESS, IMPLIED OR STATUTORY WHETHER AS TO MERCHANTABILITY, FITNESS FOR A PARTICULAR PURPOSE OR ANY OTHER MATTER.

USERS ARE SOLELY RESPONSIBLE FOR DETERMINING WHETHER A PRODUCT IS SUITABLE FOR THE USER'S PURPOSES, OR WHETHER IT WILL ACHIEVE THE USER'S INTENDED RESULTS. THERE IS NO WARRANTY AGAINST DAMAGE RESULTING FROM MISAPPLICATION, IMPROPER SPECIFICATION, ABUSE, ACCIDENT OR OTHER OPERATING CONDITIONS BEYOND WHEELOCK'S CONTROL.

SOME WHEELOCK PRODUCTS CONTAIN SOFTWARE. WITH RESPECT TO THOSE PRODUCTS, WHEELOCK DOES NOT WARRANT THAT THE OPERATION OF THE SOFTWARE WILL BE UNINTERRUPTED OR ERROR-FREE OR THAT THE SOFTWARE WILL MEET ANY OTHER STANDARD OF PERFORMANCE, OR THAT THE FUNCTIONS OR PERFORMANCE OF THE SOFTWARE WILL MEET THE USER'S REQUIREMENTS. WHEELOCK SHALL NOT BE LIABLE FOR ANY DELAYS, BREAKDOWNS, INTERRUPTIONS, LOSS, DESTRUCTION, ALTERATION, OR OTHER PROBLEMS IN THE USE OF A PRODUCT ARISING OUT OF OR CAUSED BY THE SOFTWARE.

THE LIABILITY OF WHEELOCK ARISING OUT OF THE SUPPLYING OF A PRODUCT, OR ITS USE, WHETHER ON WARRANTIES, NEGLIGENCE, OR OTHERWISE, SHALL NOT IN ANY CASE EXCEED THE COST OF CORRECTING DEFECTS AS STATED IN THE LIMITED WARRANTY AND UPON EXPIRATION OF THE WARRANTY PERIOD ALL SUCH LIABILITY SHALL TERMINATE. WHEELOCK IS NOT LIABLE FOR LABOR COSTS INCURRED IN REMOVAL, REINSTALLATION OR REPAIR OF THE PRODUCT BY ANYONE OTHER THAN WHEELOCK OR FOR DAMAGE OF ANY TYPE WHATSOEVER, INCLUDING BUT NOT LIMITED TO, LOSS OF PROFIT OR INCIDENTAL OR CONSEQUENTIAL DAMAGES. THE FOREGOING SHALL CONSTITUTE THE SOLE REMEDY OF THE PURCHASER AND THE EXCLUSIVE LIABILITY OF WHEELOCK.

IN NO CASE WILL WHEELOCK'S LIABILITY EXCEED THE PURCHASE PRICE PAID FOR A PRODUCT.

Limitation of Liability

WHEELOCK'S LIABILITY ON ANY CLAIM OF ANY KIND, INCLUDING NEGLIGENCE AND BREACH OF WARRANTY, FOR ANY LOSS OR DAMAGE RESULTING FROM, ARISING OUT OF, OR CONNECTED WITH THIS CONTRACT, OR FROM THE MANUFACTURE, SALE, DELIVERY, RESALE, REPAIR OR USE OF ANY PRODUCT COVERED BY THIS ORDER SHALL BE LIMITED TO THE PRICE APPLICABLE TO THE PRODUCT OR PART THEREOF WHICH GIVES RISE TO THE CLAIM. WHEELOCK'S LIABILITY ON ANY CLAIM OF ANY KIND SHALL CEASE IMMEDIATELY UPON THE INSTALLATION IN THE PRODUCT OF ANY PART NOT FURNISHED BY WHEELOCK. IN NO EVENT SHALL WHEELOCK BE LIABLE FOR ANY CLAIM OF ANY KIND UNLESS IT IS PROVEN THAT OUR PRODUCT WAS A DIRECT CAUSE OF SUCH CLAIM. FURTHER, IN NO EVENT, INCLUDING IN THE CASE OF A CLAIM OF NEGLIGENCE, SHALL WHEELOCK BE LIABLE FOR INCIDENTAL OR CONSEQUENTIAL DAMAGES. SOME STATES DO NOT ALLOW THE EXCLUSION OR LIMITATION OF INCIDENTAL OR CONSEQUENTIAL DAMAGES, SO THE PRECEDING LIMITATION MAY NOT APPLY TO ALL PURCHASERS.